



**DHIRAJLAL GANDHI COLLEGE OF TECHNOLOGY**  
**SALEM-636309**

Teaching- Learning and Evaluation  
**Students Feedback Evaluation Report**  
Academic year 2018-19

**Questionnaire**

**Use the (✓) Mark to answer the following questions and make comments**

- 1 Has the Teacher covered entire Syllabus in prescribed time  
A.Yes ☐ B.Partially ☐ C.Somewhat ☐ D.No opinion ☐ E.No ☐
- 2 Has the Teacher covered relevant topics beyond Syllabus?  
A.Yes ☐ B.Partially ☐ C.Somewhat ☐ D.No opinion ☐ E.No ☐
- 3 The Effectiveness of Teacher in terms of (i) Technical content and (ii) Communication skills  
A.Excellent ☐ B.Very Good ☐ C.Good ☐ D.Satisfactory ☐ E.No opinion ☐
- 4 Does the faculties creates comfortable learning environment for the students?  
A.Excellent ☐ B.Very Good ☐ C.Good ☐ D.Satisfactory ☐ E.No opinion ☐
- 5 Are the staff Recommends additional learning resources (books, journals, websites etc)?  
A.Yes ☐ B.Partially ☐ C.Somewhat ☐ D.No opinion ☐ E.No ☐
- 6 The teacher encourages extracurricular activities (cultural, Sports, social activities)  
A.Strongly Agree ☐ B.Agree ☐ C.Somewhat ☐ D.No opinion ☐ E.Never ☐
- 7 The staff Interact and encourage the students to ask questions/participation  
A.Strongly Agree ☐ B.Agree ☐ C.Somewhat ☐ D.No opinion ☐ E.Never ☐
- 8 Are the teachers discussed about your performance in Internal Assessment Examination?  
A.Yes ☐ B.Partially ☐ C.Somewhat ☐ D.No opinion ☐ E.No ☐
- 9 How the laboratory facility in the institution is enough to fulfill curriculum?  
A.Excellent ☐ B.Very Good ☐ C.Good ☐ D.Satisfactory ☐ E.No opinion ☐
- 10 The Infrastructure of library and internet facility in the college is adequate for your curriculum enrichment  
A.Strongly Agree ☐ B.Agree ☐ C.Somewhat ☐ D.No opinion ☐ E.Never ☐

Grade	A	B	C	D	E
Score	5	4	3	2	1

**PRINCIPAL**

Dhirajlal Gandhi College of Technology  
Sikkanampatty, Salem - 636 309.

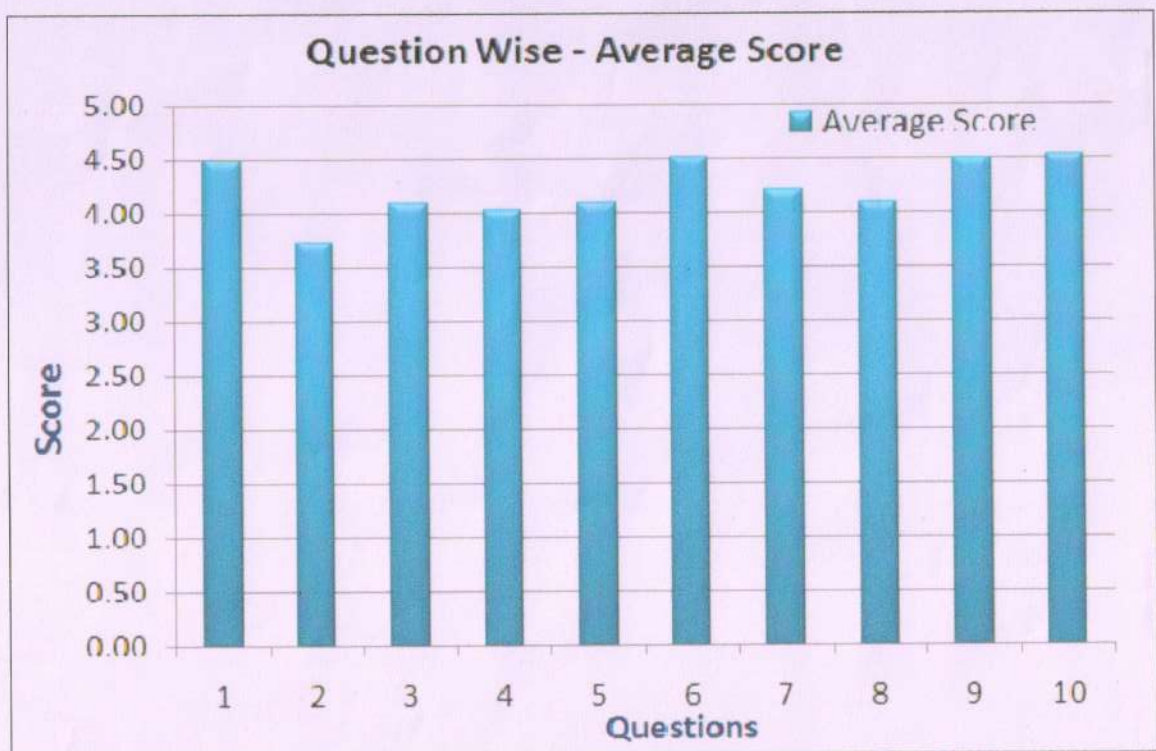
Number of responses received for the student feedback about curriculum, Infrastructure and  
Quality of Programme = 1149  
Average Score Question wise/Programme wise: (Score Out of '5')


DEPARTMENT		CIVIL	CSE	ECE	EEE	MECH	Average
1	Has the Teacher covered entire Syllabus in prescribed time	4.52	4.49	4.58	4.48	4.27	4.47
2	Has the Teacher covered relevant topics beyond Syllabus	3.71	3.60	3.76	3.73	3.81	3.72
3	Effectiveness of Teacher in terms of (i) Technical content and (ii) Communication skills	4.11	4.04	3.94	3.99	4.34	4.08
4	Creates comfortable learning environment for the students	4.00	4.07	3.92	3.93	4.18	4.02
5	Recommends additional learning resources (books, journals, websites etc)	4.14	4.00	3.93	4.21	4.17	4.09
6	Encourages extracurricular activities (cultural, Sports, social activities)	4.59	4.58	4.54	4.48	4.35	4.51
7	Interact and encourage the students to ask questions/participation	4.33	4.15	3.89	4.36	4.19	4.18
8	The teacher discussed about your performance in Internal Assessment Examination?	4.13	4.18	3.93	4.04	4.10	4.08
9	The laboratory facility in the institution is enough to fulfill curriculum	4.59	4.58	4.45	4.48	4.33	4.49
10	The Infrastructure of library and internet facility in the college is adequate for your curriculum enrichment	4.61	4.61	4.53	4.55	4.26	4.51
<b>Average Score out of 5 (1 to 5 Scale)</b>		<b>4.25</b>	<b>4.20</b>	<b>4.15</b>	<b>4.23</b>	<b>4.20</b>	<b>4.21</b>

  
**PRINCIPAL**

Dhirajlal Gandhi College of Technology  
Sikkanampatty, Salem - 636 309.

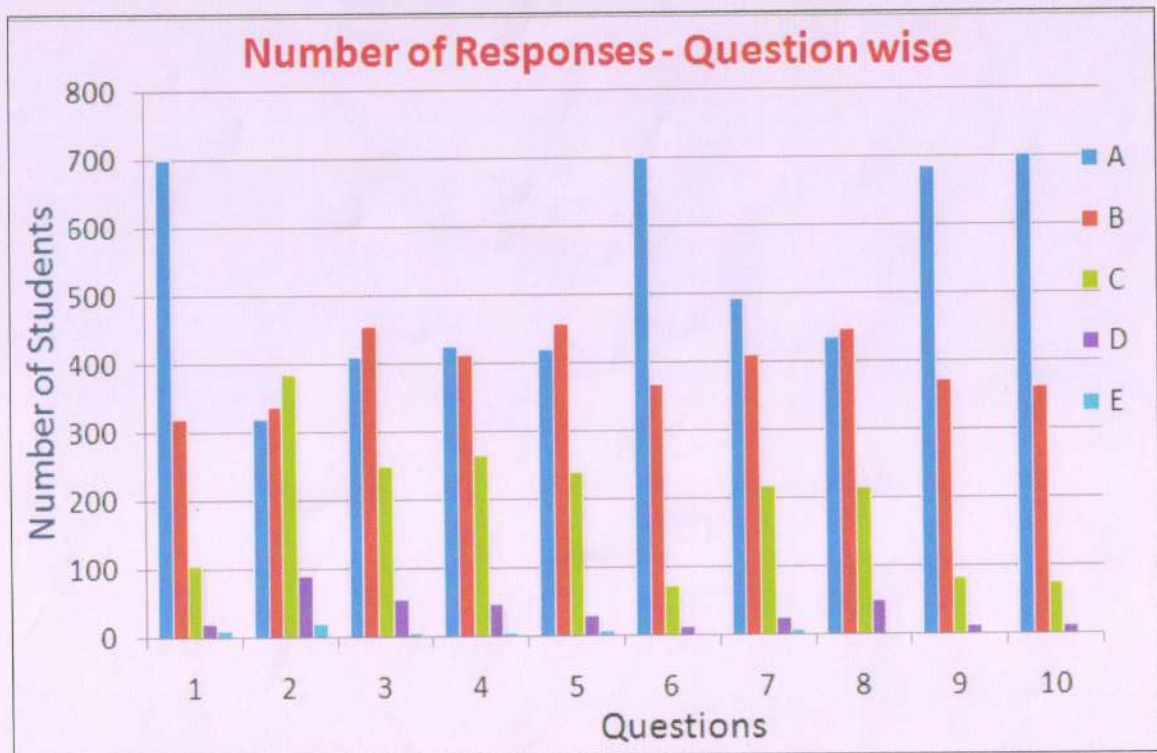
Question-wise Average Scores (in 1 to 5 scales)

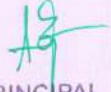


  
PRINCIPAL  
Dhirajlal Gandhi College of Technology  
Sikkannampetty, Salem - 636 309.



Number of Students Responses/Question



  
PRINCIPAL  
Dhirajlal Gandhi College of Technology  
Sikkanampatty, Salem - 636 309.